

Name KEY '15

Date _____

Chapter 6 & 9 Review – Part 1

- 1) The scatter plot shows the number of geese that migrated to a park each season.

- a) In what year did 270 geese migrate?

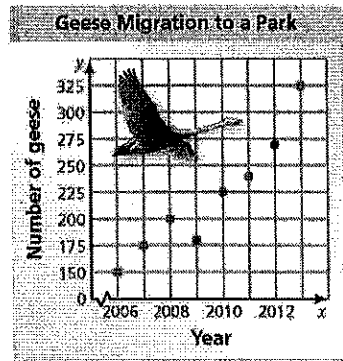
2012

- b) How many geese migrated in 2010?

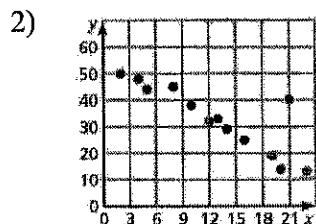
225 geese

- c) Describe the relationship shown by the data.

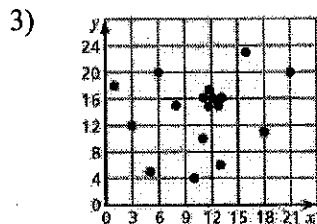
Positive relationship



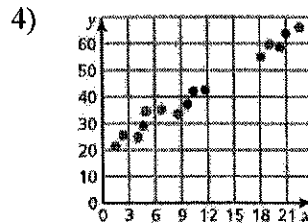
Describe the relationship between the data. Identify any outliers, gaps, or clusters.



- Neg. relationship
- Outlier is (21, 40)
- no gaps or clusters



- No relationship
- No outlier
- No gaps
- There is a cluster around the ordered pair (12, 16)



- Pos. relationship
- No outliers
- Gap between x-coordinates of 12 - 18
- No clusters

- 5) You have been working on a science project for 8 months. Each month, you measured the length of a baby alligator. The following table shows your measurements.

	September				April			
	↓				↓			
Month, x	0	1	2	3	4	5	6	7
Length (in.), y	22.0	22.5	23.5	25.0	26.0	27.5	28.5	29.5

Use the following steps to predict the baby alligator's length next September.

- Graph the data in the table.
- Draw a line that you think best approximates the points.

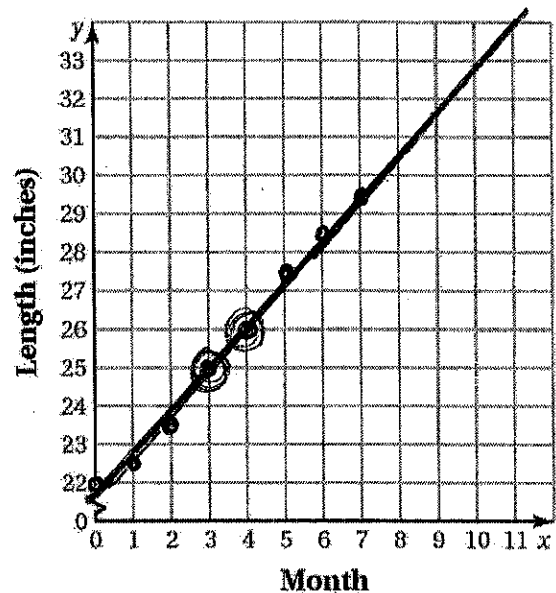
- Write an equation for your line. $(4, 26)(3, 25)$

$$m = \frac{26-25}{4-3} = 1$$

$$y = x + 22$$

- Use the equation to predict the baby alligator's length next September.

About 31.5 in



- An animal shelter opens in December. The table shows the number of cats adopted from the shelter each month from January to September.

	1	2	3	4	5	6	7	8	9
	3	6	7	11	13	14	15	18	19

- Make a scatter plot of the data and draw a line of fit.

$$(-2, 6)(6, 14)$$

- Write an equation of the line of fit.

$$y = 2x + 3$$

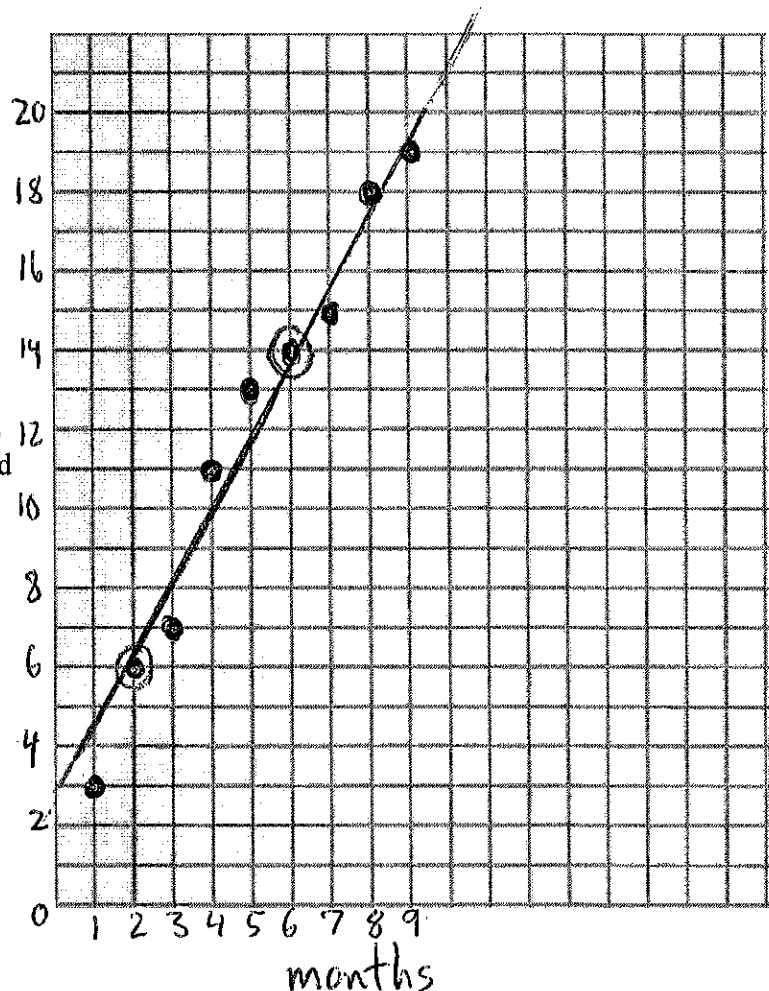
- Interpret the slope and the y-intercept of the line of fit.

Slope means that 2 # cats are adopted per month. y-int means 3 cats were adopted in month zero.

- Predict how many cats will be adopted in October.

$$y = 2(10) + 3$$

$$y = 23 \text{ (about)}$$



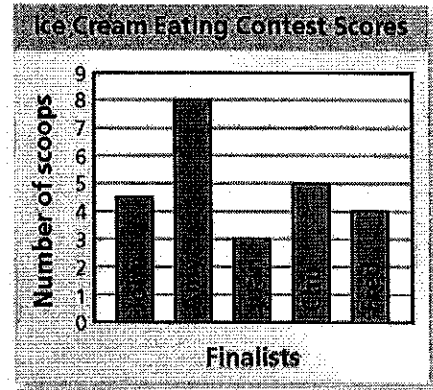
- 7) A class held an ice cream eating contest. The finalist scores are shown in the bar graph.

- a) How many scoops did John eat?

4.5 scoops

- b) What is the average number of scoops eaten by the finalists?

4.9 = mean



$$4.5 + 8 + 3 + 5 + 4 = 24.5 \div 5$$

- c) How many scoops did Amy eat compared to Juan?

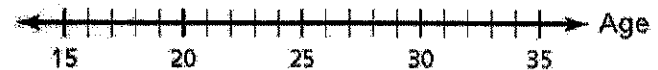
Amy ate 8 scoops compared to Juan's 3 scoops (5 more)

- d) What is the median amount of scoops eaten?

3, 4, 4.5, 5, 8
↑
median

4.5 = median

- 7) The following is a box-and-whiskers chart of ages of teachers at Young Middle School



- a) What is the median age of the teachers?

25 years old

- b) How old the youngest and oldest teachers?

18 = youngest 30 = oldest

- c) What percent of the teachers are between 18 and 30 years old?

100%

- d) What is the range of teachers' ages?

30 - 18 = 12 years

- 8) Find the mean, median, mode, and range. If an answer is not a whole number, round to the nearest tenth.

- a) Mean = $527 \div 8 = 65.875$

= 65.9

- b) Median = 65

- c) Mode = 64, 65, 68

- d) Range = $72 - 61 = 11$

61, 64, 64, 65, 65, 68, 68, 72

9) A family is making a monthly budget. Its total take-home pay for a month is \$2400.

a) What category had the most expenditures?

Food

b) How much money was budgeted for Rent?

\$600

$$2400 \cdot 0.25 = 600$$

c) How much money was budgeted for Misc?

$$2400 \cdot 0.21 = 504$$

\$504

d) In the circle graph, how many degrees is the sector of "Clothes"?

$$360 \cdot 0.15 = 54^\circ$$

